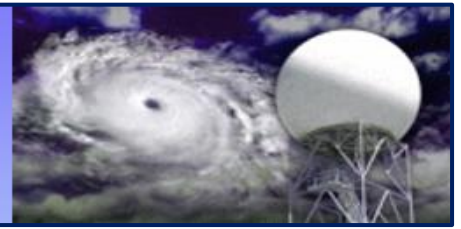


Providing Solutions for  
Future Challenges and Technology

Reliability  
Performance  
Innovation



***Pulse Systems, Inc.***

100 Energy Drive  
Canton, MA 02021-2897  
U.S.A.

Tel: (781) 828-1142  
Fax: (781) 828-8359  
E-mail: [sales@pulsesystem.com](mailto:sales@pulsesystem.com)  
[www.pulsesystem.com](http://www.pulsesystem.com)

**PSI PART NO.: X-1225**

**CHARGING CHOKE 3.5 HY**



**Input Voltage: 22 KVDC**

**Frequency: 450 PPS**

**Output Voltage: 44 KVDC**

**Output Current: 3.0 A DC**

**Isolation: 60 KVDC**

**PSI**